



# ***SMOKERCRAFT***

**2009 FISHING BOATS**



*Born and bred on the water.*



# 09 MILLENTIA



192 MILLENTIA



192 MILLENTIA



172 MILLENTIA





## BOAT FEATURES



**DRIVER'S CONSOLE** One word describes Millentia's console — easy. Gauges are easy to read. Switches and circuit breakers are easy to reach.



**FLIP-UP SEAT** The spacious stern casting deck quickly converts to comfortable passenger seating with convenient flip-up seats.



**SNAP-IN-CARPET** In the morning you've got a fishing boat with an easy-to-clean vinyl floor. Later, just snap in the premium grade carpet and you've got a family cruiser.

## 09 MILLENTIA SPECIFICATIONS

	Length	Beam	Depth	Interior Depth	Transom Width	Transom Height	Dry Weight (Lbs.)	Maximum Persons	Maximum Cap. (Lbs.)	Maximum H.P.	Fuel Capacity (Gal.)	Bottom Gauge	Side Gauge	Rib Gauge
192 MILLENTIA	18' 10"	96"	38"	27"	96"	XLS	1575	8	1750	175	40	.125	.080	.125
172 MILLENTIA	17' 2"	91"	36"	26"	88"	LS	1325	5	1400	140	24	.100	.080	.100

All boats using OBs greater than 125 H.P. should have dual or hydraulic steering.

## BOAT FEATURES



**CONVERT-A-BOW** The versatile Ultima has a unique bow that houses a fishing seat or easily converts to a walk-in design with family-style seating.



**REAR LIVEWELL** With large stern and bow livewells, the Ultima is ideal for all-day excursions.



**STERN SEATS** More seating is available in the stern with convenient flip-up seats that are roomy and comfortable.



## 09 ULTIMA SPECIFICATIONS

	Length	Beam	Depth	Interior Depth	Transom Width	Transom Height	Dry Weight (Lbs.)	Maximum Persons	Maximum Cap. (Lbs.)	Maximum H.P.	Fuel Capacity (Gal.)	Bottom Gauge	Side Gauge	Rib Gauge
192 ULTIMA	18' 10"	96"	38"	27"	96"	XLS	1575	8	1750	175	40	.125	.080	.125
172 ULTIMA	17' 2"	91"	36"	26"	88"	LS	1330	6	1425	140	24	.100	.080	.100
162 ULTIMA	16' 0"	87"	34"	23"	83"	LS	1020	5	1300	90	24	.100	.076	.125

All boats using OBs greater than 125 H.P. should have dual or hydraulic steering.

# 09 ULTIMA

172 ULTIMA



192 ULTIMA



172 ULTIMA



162 ULTIMA



162 not shown.

# 09 PRO MAG



182 PRO MAG



182 PRO MAG



162 PRO MAG



161 PRO MAG





## BOAT FEATURES



**DRIVER'S CONSOLE** Gauges are easy to read and complement the modern look of the Pro Mag's console (182 only).



**SNAP-IN CARPET** Change the look and feel of your boat in minutes with optional snap-in marine carpet that fits easily over the durable vinyl flooring.



**ROD STORAGE** Now there's room for all your favorite rods with a large center storage box on the 182 model that holds as many as eight.



**LIVEWELL** Pro Mag's livewell system keeps your catch fresh even on the longest days.

## 09 PRO MAG SPECIFICATIONS

	Length	Beam	Depth	Interior Depth	Transom Width	Transom Height	Dry Weight (Lbs.)	Maximum Persons	Maximum Cap. (Lbs.)	Maximum H.P.	Fuel Capacity (Gal.)	Bottom Gauge	Side Gauge	Rib Gauge
182 PRO MAG	18' 2"	96"	38"	27"	96"	XLS	1425	7	1425	150	31	.125	.080	.125
162 PRO MAG	16' 0"	87"	34"	23"	83"	LS	1020	5	1300	90	24	.100	.076	.125
161 PRO MAG	16' 0"	87"	34"	23"	83"	LS	960	5	1300	90	24	.100	.076	.125

All boats using OBs greater than 125 H.P. should have dual or hydraulic steering.

# BOAT FEATURES



**DRIVER'S CONSOLE** An attractive, automotive-style console puts everything you need within easy reach so you can concentrate on driving.



**FISHING SEATS** Our specially designed fishing seats feature contoured bottoms for superior comfort and full plastic cores for lasting durability.



**ROD STORAGE** Keep your favorite rods stowed safely.



**LIVEWELL** Located in the bow, our livewell has a bottom drain and a hose that runs through the transom for easy cleaning.



## 09 PRO ANGLER SPECIFICATIONS

	Length	Beam	Depth	Interior Depth	Transom Width	Transom Height	Dry Weight (Lbs.)	Maximum Persons	Maximum Cap. (Lbs.)	Maximum H.P.	Fuel Capacity (Gal.)	Bottom Gauge	Side Gauge	Rib Gauge
172 PRO ANGLER	16' 8"	92"	34"	24"	91"	LS	1225	5	1400	140	24	.100	.076	.100
171 PRO ANGLER	16' 8"	92"	34"	24"	91"	LS	1180	5	1400	140	24	.100	.070	.100
162 XL PRO ANGLER	16' 0"	91"	35"	27"	84"	LS	1010	5	1250	75	20	.100	.070	.125
161 XL PRO ANGLER	16' 0"	91"	35"	27"	84"	LS	935	5	1250	75	20	.100	.070	.125
162 PRO ANGLER	16' 0"	81"	33"	25"	74"	LS	920	5	1200	60	16	.100	.064	.070
161 PRO ANGLER	16' 0"	81"	33"	25"	74"	LS	845	5	1200	60	16	.100	.064	.070

All boats using OBs greater than 125 H.P. should have dual or hydraulic steering.



# 09 PRO ANGLER



171 PRO ANGLER



172 PRO ANGLER



171 PRO ANGLER



162 PRO ANGLER



161 XL PRO ANGLER



161 and 162 XL not shown.

## BOAT FEATURES



**BOW STORAGE** The large in-floor bow storage keeps your gear tucked safely out of the way.



**LIVEWELL** Conveniently located behind the driver's bench, the aerated livewell is large enough for "the big one."

# 09 BASS BOATS

171 PRO BASS



171 PRO BASS



171 BASS



171 CRAPPIE SC  
(Also available in Tiller)



## 09 BASS BOATS SPECIFICATIONS

	Length	Beam	Interior Depth	Transom Width	Transom Height	Dry Weight (Lbs.)	Maximum Persons	Maximum Cap. (Lbs.)	Maximum H.P.	Fuel Capacity (Gal.)	Bottom Gauge	Side Gauge
171 PRO BASS	17' 10"	81"	18"	85"	LS	1075	4	1225	90	21	.100	.100
171 BASS	17' 10"	81"	17"	81"	LS	925	4	1225	75	21	.080	.080
171 CRAPPIE SC	17' 10"	81"	17"	81"	LS	825	4	1225	60	—	.080	.080
171 CRAPPIE TL	17' 10"	81"	17"	81"	LS	765	4	1225	50	—	.080	.080

All boats using OBs greater than 125 H.P. should have dual or hydraulic steering.

# BOAT FEATURES



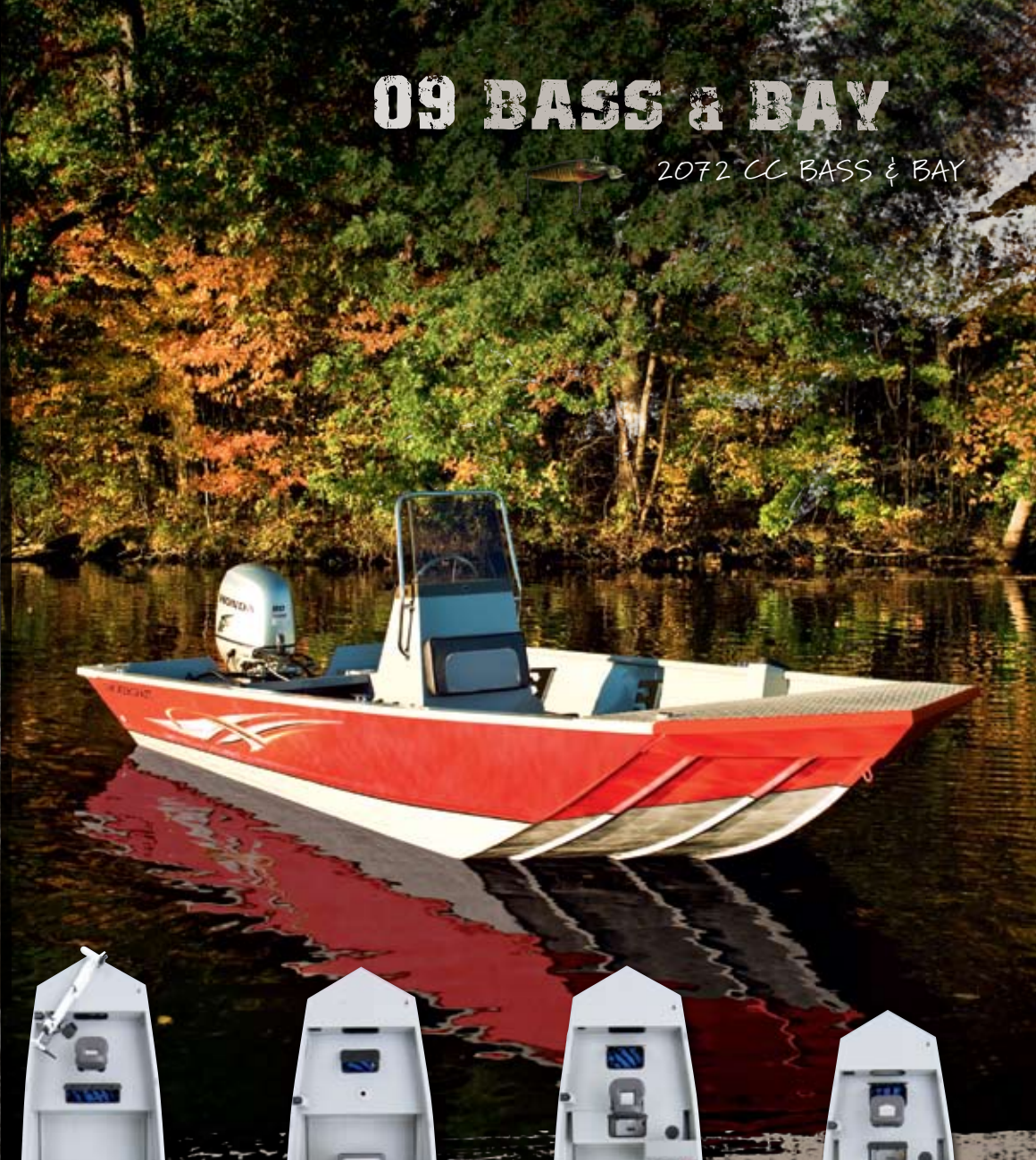
**CENTER CONSOLE** Our unique center console gives you a great view while driving, and plenty of room to maneuver onboard.



**LIVEWELL** Easily accessible and centrally located, the aerated livewell has plenty of room for a full day's catch.

# 09 BASS & BAY

2072 CC BASS & BAY



2072 CC  
BASS & BAY



1866 CC  
BASS & BAY



1866 SC  
BASS & BAY



1660 SC  
BASS & BAY

## 09 BASS & BAY SPECIFICATIONS

	Length	Beam	Depth	Interior Depth	Transom Width	Transom Height	Dry Weight (Lbs.)	Maximum Persons	Maximum Cap. (Lbs.)	Maximum H.P.	Fuel Capacity (Gal.)	Bottom Gauge	Side Gauge
2072 CC	20' 2"	97"	28"	26"	96"	LS	1225	8	1800	125	34	.125	.125
1866 CC	18' 0"	94"	26"	24"	92"	LS	980	6	1400	80	18	.100	.100
1866 SC	18' 0"	94"	26"	24"	92"	LS	980	6	1400	80	18	.100	.100
1660 SC	16' 0"	86"	23"	21"	88"	LS	740	6	1350	65	18	.100	.100

All boats using OBs greater than 125 H.P. should have dual or hydraulic steering.

## BOAT FEATURES



**DRIVER'S CONSOLE** Resorter's deluxe console features large gauges and a padded wheel. Add the optional windscreen to complete the sleek look.



**LIVEWELL** The aerated livewell is large enough for a full day's catch.

# 09 RESORTER

160 RESORTER



161 RESORTER



160 RESORTER



151 RESORTER



## 09 RESORTER SPECIFICATIONS

	Length	Beam	Depth	Interior Depth	Transom Width	Transom Height	Dry Weight (Lbs.)	Maximum Persons	Maximum Cap. (Lbs.)	Maximum H.P.	Fuel Capacity (Gal.)	Bottom Gauge	Side Gauge	Rib Gauge
161 RESORTER	16' 0"	81"	33"	25"	74"	LS	725	5	1250	60	•	.080	.064	.080
160 RESORTER	16' 0"	81"	33"	25"	74"	LS	700	5	1250	60	•	.080	.064	.080
151 RESORTER	15' 1"	75"	31"	23"	73"	LS	575	4	1000	50	•	.100	.064	.064

All boats using OBs greater than 125 H.P. should have dual or hydraulic steering.

## BOAT FEATURES



**LIVEWELL** The convenient port-side livewell keeps your catch fresh and keeps floor space open for greater maneuverability.



**ROD STORAGE** Keep all your equipment safely stowed and well organized in this roomy rod storage area. (Pro Mag only).

# 09 PRO MAG / BIG FISH



168 PRO MAG



168 PRO MAG



140 PRO MAG



16 BIG FISHERMAN



14 BIG FISHERMAN

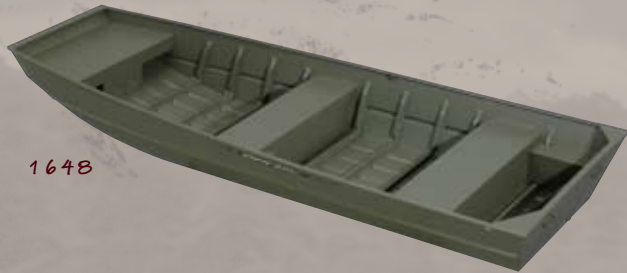


## 09 PRO MAG / BIG FISH SPECIFICATIONS

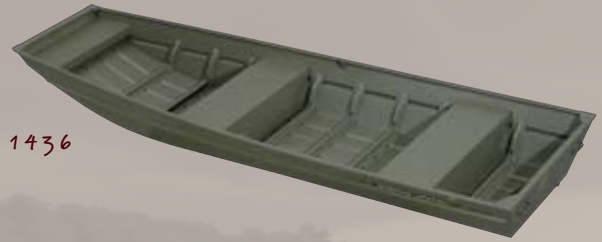
	Length	Beam	Depth	Interior Depth	Transom Width	Transom Height	Dry Weight (Lbs.)	Maximum Persons	Maximum Cap. (Lbs.)	Maximum H.P.	Fuel Capacity (Gal.)	Bottom Gauge	Side Gauge	Rib Gauge
168 PRO MAG	16' 0"	81"	33"	25"	74"	LS	700	5	1250	60	•	.080	.064	.080
140 PRO MAG	14' 5"	67"	30"	19"	59"	LS/SS	475	4	975	35	•	.064	.060	.064
16 BIG FISHERMAN	16' 5"	70"	31"	22"	63"	LS	460	5	1100	40	•	.064	.060	.064
14 BIG FISHERMAN	14' 2"	68"	30"	22"	60"	LS/SS	395	4	1100	35	•	.064	.060	.064

All boats using OBs greater than 125 H.P. should have dual or hydraulic steering.

# 09 JONS / UTILITIES



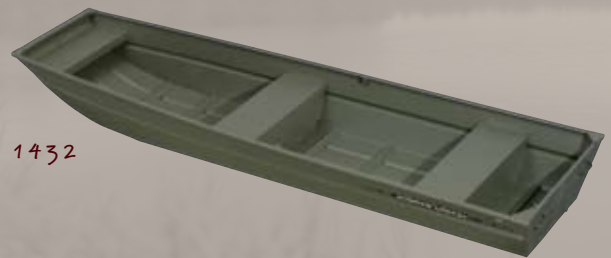
1648



1436



1644



1432

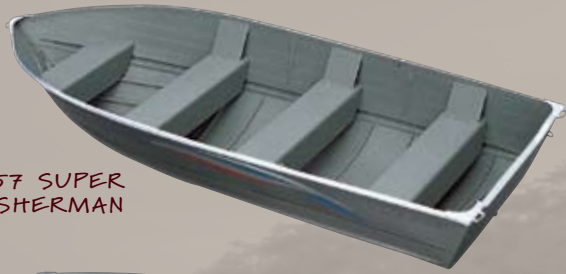


1232

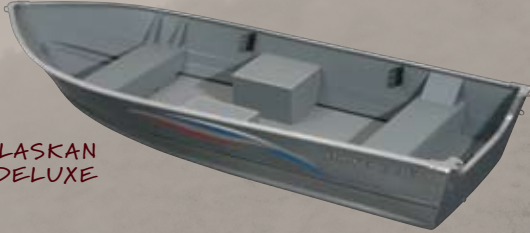
## 09 JON SPECIFICATIONS

	Length	Beam	Depth	Interior Depth	Transom Width	Transom Height	Dry Weight (Lbs.)	Maximum Persons	Maximum Cap. (Lbs.)	Maximum H.P.	Bottom Gauge	Side Gauge	Rib Gauge
1648 JON BOAT	16' 0"	72"	22"	22"	71"	LS/SS	295	4	900	35	.072	.072	.072
1644 JON BOAT	16' 0"	63"	22"	22"	68"	LS	300	4	900	35	.072	.072	.072
1448 JON BOAT	14' 0"	72"	22"	22"	71"	LS/SS	260	3	900	25	.072	.072	.072
1436 JON BOAT	14' 0"	57"	18"	18"	56"	SS	185	3	650	20	.064	.064	.064
1432 JON BOAT	14' 0"	51"	16"	16"	50"	SS	140	2	390	7	.050	.050	.050
1232 JON BOAT	12' 0"	51"	16"	16"	50"	SS	120	2	390	6	.050	.050	.050
1032 JON BOAT	10' 0"	51"	16"	16"	50"	SS	100	2	290	3	.050	.050	.050

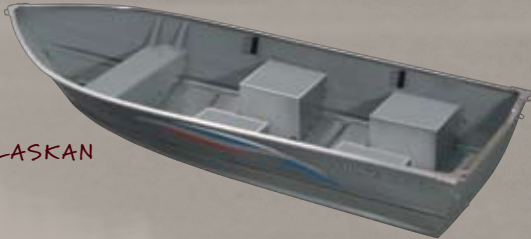
1448 and 1032 Jon not shown.



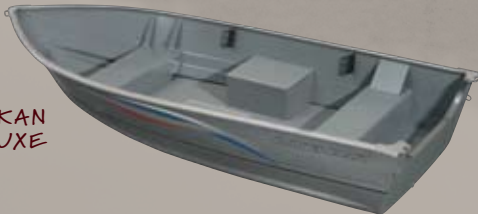
157 SUPER FISHERMAN



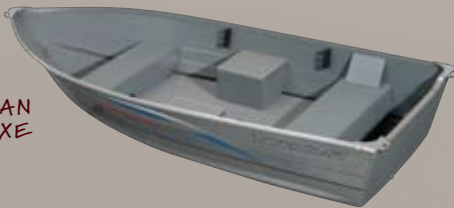
15 ALASKAN DELUXE



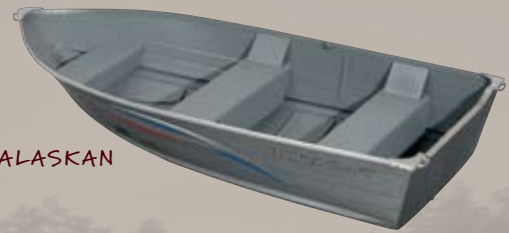
15 ALASKAN



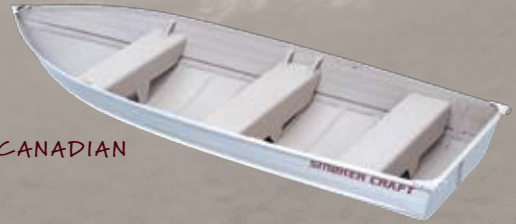
13 ALASKAN DELUXE



12 ALASKAN DELUXE



12 ALASKAN



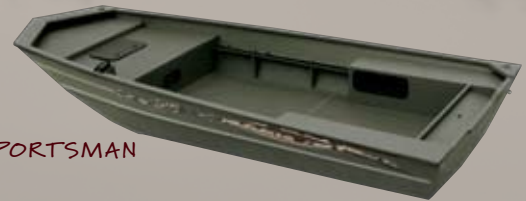
14 CANADIAN



12 CANADIAN



14 VOYAGER



1860 SPORTSMAN

## 09 UTILITIES SPECIFICATIONS

	Length	Beam	Depth	Interior Depth	Transom Width	Transom Height	Dry Weight (Lbs.)	Maximum Persons	Maximum Cap. (Lbs.)	Maximum H.P.	Bottom Gauge	Side Gauge	Rib Gauge
157 SUPER FISHERMAN	15' 5"	72"	32"	32"	61"	LS	290	4	1100	25	.070	.060	.064
15/15 ALASKAN DLX	14' 11"	68"	27"	21"	59"	LS/SS	270	4	850	35	.064	.060	.064
13 ALASKAN DLX	12' 11"	66"	26"	20"	56"	LS/SS	225	4	700	25	.064	.060	.064
12/12 ALASKAN DLX	11' 10"	63"	24"	19"	56"	LS/SS	185	3	700	15	.064	.060	.064
14 CANADIAN	13' 10"	59"	20"	20"	50"	SS	130	4	700	15	.050	.050	.050
12 CANADIAN	11' 9"	56"	20"	20"	50"	SS	112	3	600	10	.050	.050	.050
14 VOYAGER	14' 2"	68"	30"	30"	60"	LS/SS	230	5	1000	35	.064	.060	.064
1860 SPORTSMAN	18' 0"	86"	23"	21"	88"	LS	700	6	1400	80	.100	.100	•
1660 SPORTSMAN	16' 0"	86"	23"	21"	88"	LS	640	6	1350	65	.100	.100	•

1860 Sportsman not shown.



**SMOKERCRAFT**  
STANDARDS & OPTIONS



192 MILLENTIA 172 MILLENTIA 192 ULTIMA 172 ULTIMA 162 ULTIMA 182 PRO MAG 162 PRO MAG 161 PRO MAG 172 PRO ANGLER 171 PRO ANGLER 162 XL PRO ANGLER 161 XL PRO ANGLER 162 PRO ANGLER 161 PRO ANGLER 171 PRO BASS 171 BASS 171 CRAPPIE SC/TL 2072 CC BASS & BAY 1866 CC BASS & BAY

**SPECIFICATIONS**

Length	18' 10"	17' 2"	18' 10"	17' 2"	16' 0"	18' 2"	16' 0"	16' 0"	16' 8"	16' 8"	16' 0"	16' 0"	16' 0"	16' 0"	17' 10"	17' 10"	17' 10"	20' 2"	18' 0"
Beam	96"	91"	96"	91"	87"	96"	87"	87"	92"	92"	91"	91"	81"	81"	81"	81"	81"	97"	94"
Depth	38"	36"	38"	36"	34"	38"	34"	34"	34"	34"	35"	35"	33"	33"	—	—	—	28"	26"
Interior Depth	27"	26"	27"	26"	23"	27"	23"	23"	24"	24"	27"	27"	25"	25"	18"	17"	17"	26"	24"
Transom Width	96"	88"	96"	88"	83"	96"	83"	83"	91"	91"	84"	84"	74"	74"	85"	81"	81"	96"	92"
Transom Height	XLS	LS	XLS	LS	LS	XLS	LS	LS	LS	LS	LS	LS	LS	LS	LS	LS	LS	LS	LS
Dry Weight (Lbs.)	1575	1325	1575	1330	1020	1425	1020	960	1225	1180	1010	935	920	845	1075	925	825/765	1225	980
Maximum Persons	8	5	8	6	5	7	5	5	5	5	5	5	5	5	4	4	4	8	6
Maximum Capacity (Lbs.)	1750	1400	1750	1425	1300	1425	1300	1300	1400	1400	1250	1250	1200	1200	1225	1225	1225	1800	1400
Maximum H.P.	175	140	175	140	90	150	90	90	140	140	75	75	60	60	90	75	60/50	125	80
Fuel Capacity (Gal.)	40	24	40	24	24	31	24	24	24	24	20	20	16	16	21	21	—	34	18
Bottom Gauge	0.125	0.100	0.125	0.100	0.100	0.125	0.100	0.100	0.100	0.100	0.100	0.100	0.100	0.100	0.100	0.080	0.080	0.125	0.100
Side Gauge	0.080	0.080	0.080	0.080	0.076	0.080	0.076	0.076	0.076	0.076	0.070	0.070	0.064	0.064	0.100	0.080	0.080	0.125	0.100
Rib Gauge	0.125	0.100	0.125	0.100	0.125	0.125	0.125	0.125	0.100	0.100	0.125	0.125	0.070	0.070	—	—	—	—	—

**COLORS**

Black	S	S	•	•	•	S	S	S	S	S	S	S	S	S	S	S	S	•	•
Blue	•	S	S	S	S	•	•	•	•	•	•	•	•	•	•	•	•	•	•
Charcoal	•	•	•	•	•	•	•	•	•	•	•	•	•	•	•	•	•	•	•
Gray	•	•	•	•	•	•	•	•	•	•	•	•	•	•	•	•	•	S	•
Burgundy	•	•	•	•	•	•	•	•	•	•	•	•	•	•	•	•	•	•	•
Red	•	•	S	S	S	•	•	•	S	S	S	S	S	S	S	S	S	•	S

**HULL**

Semi-V Hull	•	•	•	•	•	•	•	•	•	•	S	S	S	S	•	•	•	S	S
Hydra-Lift Rolled V-Hull	S	S	S	S	S	S	S	S	S	S	•	•	•	•	•	•	•	•	•
Keels	(5)	(5)	(5)	(5)	(5)	(5)	(5)	(5)	(5)	(5)	(5)	(5)	(3)	(3)	•	•	•	(3)	(3)

**FLOOR / CARPET**

Treated Floor with Lifetime Warranty	S	S	S	S	S	S	S	S	S	S	S	S	S	S	S	S	S	S	S
5-Year Carpet Warranty	S	S	S	S	S	S	S	S	S	S	S	S	S	S	S	S	•	•	•
Vinyl Floor Covering	S	S	S	S	S	S	S	S	S	S	S	S	S	S	•	•	S	S	S
Snap-In Carpet	S	S	S	S	S	O	O	O	O	O	O	O	O	O	•	•	•	•	•

**WINDSHIELD**

Curved Walk-Thru Windshield	S	S	S	S	S	S	•	S	•	S	•	S	•	•	•	•	•	•	•
Windscreen	•	•	•	•	•	•	S	•	S	•	S	•	S	S	S	S	•	S	S

**CONSOLE / DASH**

Tachometer	S	S	S	S	S	S	S	S	S	S	S	S	S	S	S	S	•	S	S
Speedometer	S	S	S	S	S	S	S	S	S	S	S	S	S	S	S	S	•	•	•
Volt Meter	S	S	S	S	S	S	S	S	•	•	S	S	•	•	S	S	•	•	•
Fuel Gauge	S	S	S	S	S	S	S	S	S	S	S	S	S	S	S	S	•	S	S
Lighted Compass	S	S	S	S	•	S	•	•	•	•	•	•	•	•	•	•	•	•	•
Horn	S	S	S	S	S	S	S	S	S	S	S	S	S	S	•	•	•	•	•
Circuit Breakers	S	S	S	S	S	S	S	S	S	S	S	S	S	S	S	S	•	S	S
Starboard Console	•	•	•	•	•	•	•	•	•	•	•	•	•	•	•	•	•	•	•

**STEREO**

AM/FM Stereo																			
w/Auxiliary Port for MP3 Player	S	S	S	S	S	O	O	O	O	O	O	O	O	O	O	O	•	•	•

**LIVEWELL**

Stern Livewell (Gal.)	(23)	(21)	(23)	(23)	(18)	(26)	(18)	(18)	•	•	•	•	•	•	(25)	(25)	•	•	•
	LART	LART	LA	LA	A	A	A	A						A	A				
Bow Livewell (Gal.)	(12)	(12)	(12)	(12)	(12)	(18)	(25)	(25)	(25)	(25)	(25)	(25)	(25)	(25)	•	•	•	•	•
	LA	LA	LA	LA	A	A	A	A	A	A	A	A	A	A					
Port Livewell (Gal.)	•	•	•	•	•	•	•	•	•	•	•	•	•	•	•	•	•	•	•
Center Livewell (Gal.)	•	•	•	•	•	•	•	•	•	•	•	•	•	•	•	•	•	S	S
Baitwell w/ Bucket	•	•	•	•	•	•	•	•	•	•	•	•	•	•	S	•	•	•	•



192 MILLENTIA  
 172 MILLENTIA  
 192 ULTIMA  
 172 ULTIMA  
 162 ULTIMA  
 182 PRO MAG  
 162 PRO MAG  
 161 PRO MAG  
 172 PRO ANGLER  
 171 PRO ANGLER  
 162 XL PRO ANGLER  
 161 XL PRO ANGLER  
 162 PRO ANGLER  
 161 PRO ANGLER  
 171 PRO BASS  
 171 BASS  
 171 CRAPPIE SC/TL  
 2072 CC BASS & BAY  
 1866 CC BASS & BAY

**TROLLING MOTOR**

Trolling Motor Plug	S	S	S	S	S	S	S	S	S	S	S	S	S	S	S	S	S	S	S
Motor Tilt Switch	S	S	•	•	•	S	•	•	•	•	•	•	•	S	•	•	•	•	•
(4) 4-1/2" Cleats	•	•	•	•	•	•	•	•	•	•	•	•	S	S	S	S	S	•	•
(4) 6" Cleats	•	•	•	•	S	S	S	S	S	S	S	S	•	•	•	•	•	S	S
(4) 6" Pull-Up Cleats	S	S	S	S	•	•	•	•	•	•	•	•	•	•	•	•	•	•	•

**LIGHTS**

Navigation Lights	S	S	S	S	S	S	S	S	S	S	S	S	S	S	S	S	S	S	S
-------------------	---	---	---	---	---	---	---	---	---	---	---	---	---	---	---	---	---	---	---

**SEATING**

Movable Pedestal	•	(2)	(2)	(2)	(2)	(2)	(2)	(2)	(2)	(2)	(2)	(2)	(2)	(2)	(2)	•	•	•	•
Stationary Pedestal	•	•	•	•	•	•	•	•	•	•	•	•	•	•	•	•	•	•	•
Movable Helm Pedestal with Slider	S	S	S	S	S	S	S	S	S	S	S	S	S	•	•	•	•	•	•
Movable Helm Pedestal	•	•	•	•	•	•	•	•	•	•	•	•	•	•	•	•	•	•	•
(2) Movable Hydraulic Pedestals	S	•	•	•	•	•	•	•	•	•	•	•	•	•	•	•	•	•	•
Rear Fold Down Seats	S	S	S	S	S	•	•	•	•	•	•	•	•	•	•	•	•	•	•
Bow Backrest with Cushions	•	•	S	S	S	•	•	•	•	•	•	•	•	•	•	•	•	•	•
Seat Bases	(6)	(6)	(6)	(6)	(6)	(6)	(6)	(6)	(6)	(5)	(5)	(5)	(5)	(2)	(2)	•	(1)	(1)	(1)
Bass Seats	(3)	(3)	(3)	(3)	(3)	(3)	(3)	(3)	(3)	(3)	(3)	(3)	(3)	(2)	(2)	•	•	•	•
Additional Bass Seat	O	O	O	O	O	O	O	O	O	O	O	O	O	•	•	•	O	O	O
Stem (Hydraulic)	O	•	•	•	•	•	•	•	•	•	•	•	•	•	•	•	•	•	•
Aluminum Bench Seats	•	•	•	•	•	•	•	•	•	•	•	•	•	•	•	•	•	•	•

**STORAGE**

Bow Center Rod Storage	S	S	•	•	•	S	•	•	•	•	•	•	•	S	•	•	•	•	•
Port Rod Storage	S	S	S	S	S	S	S	S	S	S	S	S	S	S	•	S	•	S	S
Starboard Rod Storage	•	S	S	•	•	•	S	S	•	•	•	•	•	•	•	•	•	S	S
Starboard Side Storage	S	S	•	S	S	S	•	•	S	S	S	S	S	S	•	•	•	•	•
Console Storage	S	S	S	S	S	S	•	•	•	•	•	•	•	•	•	•	•	•	•
Rod Holders	•	•	•	•	•	•	•	•	•	•	•	•	S	S	•	•	•	S	S
Bow Storage	S	S	S	S	S	S	S	S	S	S	S	S	S	S	S	S	•	S	S
Stern Storage	S	S	S	S	S	S	S	S	•	•	S	S	•	•	•	•	•	•	•
In-Floor Storage	•	•	S	S	•	•	•	•	•	•	•	•	•	•	•	•	•	•	•

**MISCELLANEOUS**

Bow & Stern Castings with Handles	•	•	•	•	•	•	•	•	•	•	•	•	•	•	•	•	•	•	•
Oar Locks	•	•	•	•	•	•	•	•	•	•	•	•	•	•	•	•	•	•	•
Nonskid Interior	•	•	•	•	•	•	•	•	•	•	•	•	•	•	•	•	•	•	•
Lockable Glove Box	S	S	S	S	S	S	S	•	•	S	•	•	•	•	•	•	•	•	•
Glove Box	•	•	•	•	•	•	•	•	S	•	•	S	•	•	•	•	•	•	•
Toe Kicks	S	S	S	S	S	S	S	S	•	•	S	S	•	•	•	•	•	•	•
Reinforced for Downriggers	S	S	S	S	•	S	•	•	•	•	•	•	•	•	•	•	•	•	•
Bilge Pump	S	S	S	S	S	S	S	S	S	S	S	S	S	S	S	S	S	S	S
Swim Platform	•	•	O	O	O	•	•	•	•	•	•	•	•	•	•	•	•	•	•
Ski Tow	•	•	O	O	O	•	•	•	•	•	•	•	•	•	•	•	•	•	•
Hydraulic Steering	S	•	S	•	•	S	•	•	•	•	•	•	•	•	•	•	•	•	•
Tilt Steering	S	S	S	S	S	S	•	•	•	•	S	S	•	•	•	•	•	S	S
Stainless Steel Bow Rail	•	•	S	•	•	•	•	•	•	•	•	•	•	•	•	•	•	•	•
Twice Baked Urethane Paint	S	S	S	S	S	S	S	S	S	S	S	S	S	S	•	•	•	•	•
Cup Holders	S	S	S	S	S	S	S	S	S	S	S	S	S	S	S	•	•	•	•

**BATTERY / ACCESS**

Access Plate	(8")	(8")	(8")	(8")	(8")	(8")	(8")	(8")	(8")	(8")	(8")	(8")	(6")	(6")	•	•	•	•	•
Battery Charger	S	•	•	•	•	•	•	•	•	•	•	•	•	•	•	•	•	•	•
Battery Compartments	(3)	(3)	(3)	(3)	(2)	(3)	(2)	(2)	(2)	(2)	(2)	(2)	•	•	(3)	•	•	•	•

**CANVAS**

Fisherman's Top	S	O	S	O	O	O	O	•	O	•	O	•	O	•	•	•	•	•	•
Side Curtains	O	O	O	O	O	O	O	•	O	•	O	•	O	•	•	•	•	•	•
Aft Curtains	O	O	O	O	O	O	O	•	O	•	O	•	O	•	•	•	•	•	•
Walk-Thru Curtains	O	O	O	O	O	O	O	•	O	•	O	•	O	•	•	•	•	•	•
Bow Cover	O	O	O	O	O	O	O	•	O	•	O	•	O	•	•	•	•	•	•
Mooring Cover	O	O	O	O	O	O	O	O	O	O	O	O	O	O	O	O	O	•	•



1866 SC BASS & BAY    1660 SC BASS & BAY    161 RESORTER    160 RESORTER    151 RESORTER    168 PRO MAG    140 PRO MAG    16 BIG FISHERMAN    14 BIG FISHERMAN    157 SUPER FISHERMAN    15/15 ALASKAN DLX    13 ALASKAN DLX    12/12 ALASKAN DLX    14 VOYAGER    14 CANADIAN    12 CANADIAN

**SPECIFICATIONS**

Length	18' 0"	16' 0"	16' 0"	16' 0"	15' 1"	16' 0"	14' 5"	16' 5"	14' 2"	15' 5"	14' 11"	12' 11"	11' 11"	14' 2"	13' 10"	11' 9"
Beam	94"	86"	81"	81"	75"	81"	67"	70"	68"	72"	68"	66"	63"	68"	59"	56"
Depth	26"	23"	33"	33"	31"	33"	30"	31"	30"	32"	27"	26"	24"	30"	20"	20"
Interior Depth	26"	21"	25"	25"	25"	25"	19"	22"	22"	32"	21"	20"	19"	30"	20"	20"
Transom Width	92"	88"	74"	74"	73"	74"	59"	63"	60"	61"	59"	56"	56"	60"	50"	50"
Transom Height	LS	LS		LS	LS	LS	LS	LS/SS	LS	LS/SS	LS	LS/SS	LS/SS	LS/SS	LS/SS	SS
Dry Weight (Lbs.)	980	740	725	700	575	700	475	460	395	290	270	225	185	230	130	112
Maximum Persons	6	6	5	5	4	5	4	5	4	4	4	4	3	5	4	3
Maximum Capacity (Lbs.)	1400	1350	1250	1250	1000	1250	975	1100	1100	1100	850	700	700	1000	700	600
Maximum H.P.	80	65	60	60	50	60	35	40	35	25	35	25	15	35	15	10
Fuel Capacity (Gal.)	18	18	•	•	•	•	•	•	•	•	•	•	•	•	•	•
Bottom Gauge	0.100	0.100	0.080	0.080	0.100	0.080	0.064	0.064	0.064	0.070	0.064	0.064	0.064	0.064	0.050	0.050
Side Gauge	0.100	0.100	0.064	0.064	0.064	0.064	0.060	0.060	0.060	0.060	0.060	0.060	0.060	0.060	0.050	0.050
Rib Gauge	—	—	0.080	0.080	0.064	0.080	0.064	0.064	0.064	0.064	0.064	0.064	0.064	0.064	0.050	0.050

**COLORS**

Black	•	•	•	•	•	•	•	S	S	•	•	•	•	S	•	•
Blue	•	S	•	•	•	•	•	•	•	•	•	•	•	•	•	•
Charcoal	•	•	•	•	•	S	S	•	•	S	•	•	•	•	•	•
Gray	•	•	•	•	•	•	•	•	•	•	S	S	S	•	•	•
Burgundy	•	•	S	S	S	•	•	•	•	•	•	•	•	•	•	•
Red	S	•	•	•	•	•	•	•	•	•	•	•	•	•	•	•

**HULL**

Semi-V Hull	S	S	S	S	S	•	•	•	•	•	•	•	•	•	•	•
Hydra-Lift Rolled V-Hull	•	•	•	•	•	•	•	•	•	•	•	•	•	•	•	•
Keels	(3)	(3)	(3)	(3)	•	(3)	(3)	(3)	(3)	(3)	(3)	(3)	(3)	(3)	•	•

**FLOOR / CARPET**

Treated Floor with Lifetime Warranty	S	S	S	S	S	S	S	S	S	•	S(DLX)	S	S(DLX)	•	•	•
5-Year Carpet Warranty	•	•	S	S	S	S	S	S	S	•	•	•	•	•	•	•
Vinyl Floor Covering	S	S	S	S	S	S	S	S	S	•	S(DLX)	S	S(DLX)	•	•	•
Snap-In Carpet	•	•	•	•	•	•	•	•	•	•	•	•	•	•	•	•

**WINDSHIELD**

Curved Walk-Thru Windshield	•	•	•	•	•	•	•	•	•	•	•	•	•	•	•	•
Windscreen	•	•	O	•	O	•	•	•	•	•	•	•	•	•	•	•

**CONSOLE / DASH**

Tachometer	•	•	S	•	S	•	•	•	•	•	•	•	•	•	•	•
Speedometer	•	•	S	•	S	•	•	•	•	•	•	•	•	•	•	•
Volt Meter	•	•	•	•	•	•	•	•	•	•	•	•	•	•	•	•
Fuel Gauge	S	S	•	•	•	•	•	•	•	•	•	•	•	•	•	•
Lighted Compass	•	•	•	•	•	•	•	•	•	•	•	•	•	•	•	•
Horn	•	•	S	•	S	•	•	•	•	•	•	•	•	•	•	•
Circuit Breakers	S	S	S	S	S	S	S	S	S	•	•	•	•	•	•	•
Starboard Console	•	•	•	•	•	•	•	O	O	O	•	•	•	•	•	•

**STEREO**

AM/FM Stereo	•	•	•	•	•	•	•	•	•	•	•	•	•	•	•	•
w/Auxiliary Port for MP3 Player	•	•	•	•	•	•	•	•	•	•	•	•	•	•	•	•

**LIVEWELL**

Stern Livewell (Gal.)	•	•	•	•	•	•	•	•	•	•	•	•	•	•	•	•
Bow Livewell (Gal.)	S	S	•	•	(18) A	•	•	•	•	•	•	•	•	•	•	•
Port Livewell (Gal.)	•	•	(21) A	(21)	•	(21) A	(15)	(25)	(21)	•	•	•	•	•	•	•
Center Livewell (Gal.)	•	•	•	•	•	•	•	•	•	•	•	•	•	•	•	•
Baitwell w/ Bucket	•	•	•	•	•	•	•	•	•	•	•	•	•	•	•	S

1866 SC BASS & BAY  
 1660 SC BASS & BAY  
 161 RESORTER  
 160 RESORTER  
 151 RESORTER  
 168 PRO MAG  
 140 PRO MAG  
 16 BIG FISHERMAN  
 14 BIG FISHERMAN  
 157 SUPER FISHERMAN  
 15/15 ALASKAN DLX  
 13 ALASKAN DLX  
 12/12 ALASKAN DLX  
 14 VOYAGER  
 14 CANADIAN  
 12 CANADIAN

**TROLLING MOTOR**

Trolling Motor Plug	S	S	S	S	S	S	S	S	S	S	•	•	•	•	•	•	•
Motor Tilt Switch	•	•	•	•	•	•	•	•	•	•	•	•	•	•	•	•	•
(4) 4-1/2" Cleats	•	•	•	•	•	•	•	•	•	•	•	•	•	•	•	•	•
(4) 6" Cleats	S	S	•	•	S	•	•	•	•	•	•	•	•	•	•	•	•
(4) 6" Pull-Up Cleats	•	•	•	•	•	•	•	•	•	•	•	•	•	•	•	•	•

**LIGHTS**

Navigation Lights	S	S	S	S	S	S	S	S	S	S	•	•	•	•	•	•	•
-------------------	---	---	---	---	---	---	---	---	---	---	---	---	---	---	---	---	---

**SEATING**

Movable Pedestal	(2)	(2)	(1)	(1)	(1)	(1)	(1)	•	•	•	•	•	•	•	•	•	•
Stationary Pedestal	•	•	•	S	•	S	S	•	•	•	•	•	•	•	•	•	•
Movable Helm Pedestal with Slider	S	S	•	•	•	•	•	•	•	•	•	•	•	•	•	•	•
Movable Helm Pedestal	•	•	S	•	S	•	•	•	•	•	•	•	•	•	•	•	•
(2) Movable Hydraulic Pedestals	•	•	•	•	•	•	•	•	•	•	•	•	•	•	•	•	•
Rear Fold Down Seats	•	•	•	•	•	•	•	•	•	•	•	•	•	•	•	•	•
Bow Backrest with Cushions	•	•	•	•	•	•	•	•	•	•	•	•	•	•	•	•	•
Seat Bases	(4)	(4)	(4)	(4)	(6)	(2)	(2)	(2)	•	•	•	•	•	•	•	•	•
Bass Seats	(2)	(2)	(2)	(2)	(2)	(2)	(2)	(2)	•	•	•	•	•	•	•	•	•
Additional Bass Seat	O	O	O	O	O	O	O	O	O	•	•	•	•	•	•	•	•
Stem (Hydraulic)	•	•	•	•	•	•	•	•	•	•	•	•	•	•	•	•	•
Aluminum Bench Seats	•	•	•	•	•	•	•	•	•	•	(4)	•	•	(3)*	(3)	(3)	(3)

**STORAGE**

Bow Center Rod Storage	•	•	•	•	•	•	•	•	•	•	•	•	•	•	•	•	•
Port Rod Storage	S	S	•	•	•	•	•	•	•	•	•	•	•	•	•	•	•
Starboard Rod Storage	S	S	•	•	•	S	S	•	•	•	•	•	•	•	•	•	•
Starboard Side Storage	•	•	•	•	•	•	•	S	S	•	•	•	•	•	•	•	•
Console Storage	•	•	•	•	•	•	•	•	•	•	•	•	•	•	•	•	•
Rod Holders	S	S	•	•	S	•	•	S	S	•	S	S	•	•	•	•	•
Bow Storage	S	S	S	S	•	S	S	S	•	•	•	•	•	•	•	•	•
Stern Storage	•	•	•	•	•	•	•	•	•	•	•	•	•	•	•	•	•
In-Floor Storage	•	•	•	•	•	•	•	•	•	•	•	•	•	•	•	•	•

**MISCELLANEOUS**

Bow & Stern Castings with Handles	•	•	•	•	•	•	•	•	•	•	S	S	S	S	S	S	S
Oar Locks	•	•	•	•	•	•	•	•	•	•	S	•	•	•	•	S	S
Nonskid Interior	•	•	•	•	•	•	•	•	•	•	S	S	S	S	•	S	S
Lockable Glove Box	•	•	•	•	•	•	S	S	•	•	•	•	•	•	•	•	•
Glove Box	•	•	•	•	•	•	•	•	•	•	•	•	•	•	•	•	•
Toe Kicks	•	•	•	•	•	•	•	•	•	•	•	•	•	•	•	•	•
Reinforced for Downriggers	•	•	•	•	•	•	•	•	•	•	•	•	•	•	•	•	•
Bilge Pump	S	S	S	S	S	S	S	S	•	•	•	•	•	•	•	•	•
Swim Platform	•	•	•	•	•	•	•	•	•	•	•	•	•	•	•	•	•
Ski Tow	•	•	•	•	•	•	•	•	•	•	•	•	•	•	•	•	•
Hydraulic Steering	•	•	•	•	•	•	•	•	•	•	•	•	•	•	•	•	•
Tilt Steering	S	S	•	•	•	•	•	•	•	•	•	•	•	•	•	•	•
Stainless Steel Bow Rail	•	•	•	•	•	•	•	•	•	•	•	•	•	•	•	•	•
Twice Baked Urethane Paint	•	•	S	S	S	•	•	•	•	•	•	•	•	•	•	•	•
Cup Holders	•	•	•	•	S	•	•	•	•	•	•	•	•	•	•	•	•

**BATTERY / ACCESS**

Access Plate	•	•	•	•	•	•	•	•	•	•	•	•	•	•	•	•	•
Battery Charger	•	•	•	•	•	•	•	•	•	•	•	•	•	•	•	•	•
Battery Compartments	•	•	•	•	•	•	•	•	•	•	•	•	•	•	•	•	•

**CANVAS**

Fisherman's Top	•	•	•	•	•	•	•	•	•	•	•	•	•	•	•	•	•
Side Curtains	•	•	•	•	•	•	•	•	•	•	•	•	•	•	•	•	•
Aft Curtains	•	•	•	•	•	•	•	•	•	•	•	•	•	•	•	•	•
Walk-Thru Curtains	•	•	•	•	•	•	•	•	•	•	•	•	•	•	•	•	•
Bow Cover	•	•	•	•	•	•	•	•	•	•	•	•	•	•	•	•	•
Mooring Cover	•	•	O	O	O	O	O	O	O	O	O	O	O	O	O	•	•



[www.smokercraft.com](http://www.smokercraft.com)



SMOKER CRAFT, INC. SOUTH  
P.O. Box 1267 • LaGrange, GA 30241

SMOKER CRAFT, INC. NORTH  
P.O. Box 129 • Minong, WI 54859

SMOKER CRAFT, INC.  
P.O. Box 65 • New Paris, IN 46553

SMOKER CRAFT, INC. WEST  
P.O. Box 219 • Stayton, OR 97383



The specifications of any Smoker Craft boat are subject to change without notice.  
Printed 9/08; 323-B-06.

To talk to the dealer nearest you, dial 866 719-7873.  
Connects directly to dealer. Please call during business hours.